

Supplementary material

Figure S1: Percent change (%) in the number of hospitalizations with interventions on the cardiac valves by age category, CCI and year of discharge (reference year 2010)

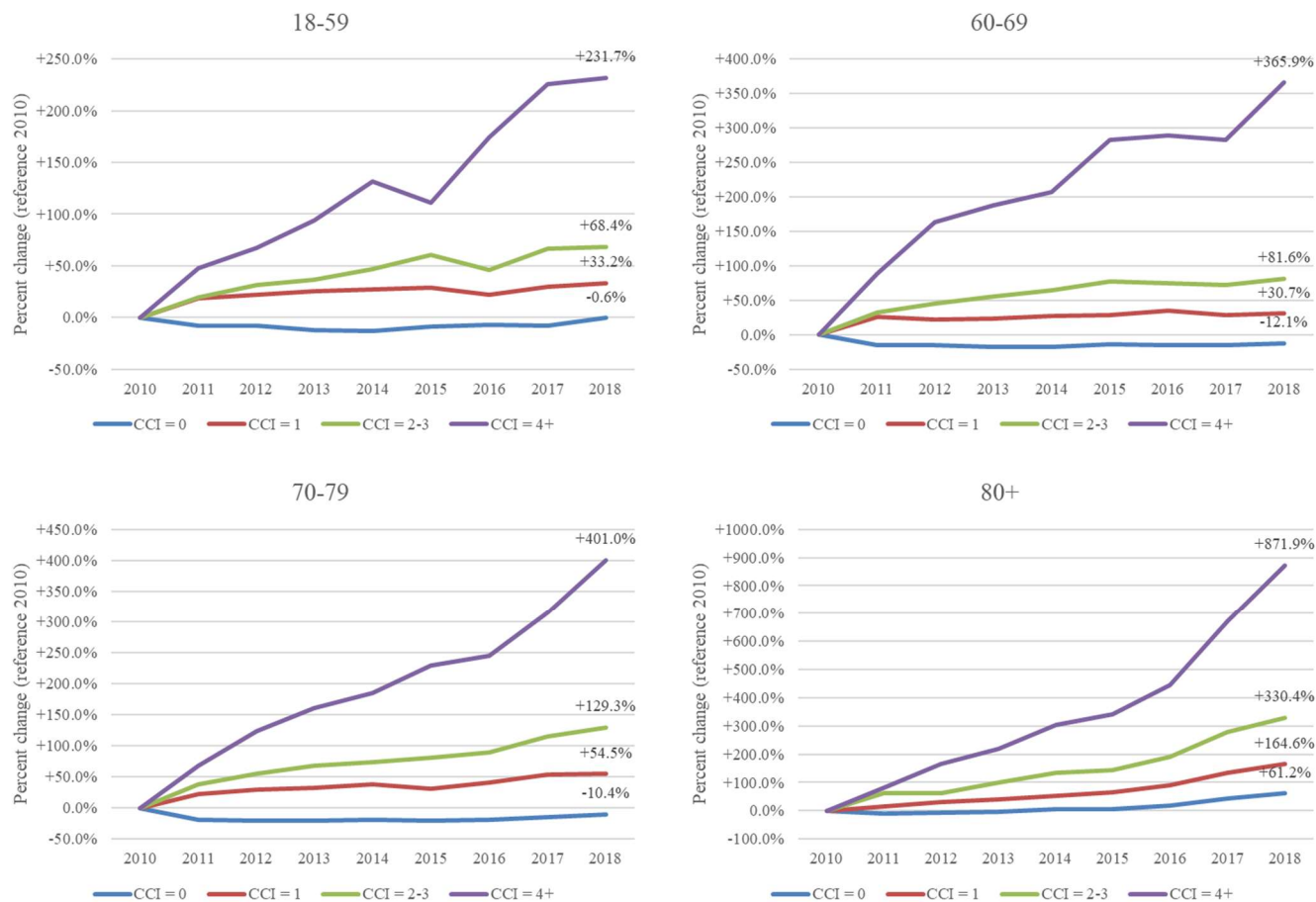


Figure S2: Distribution (%) of hospitalizations with interventions on the cardiac valves by type of valve and intervention (single/combined)

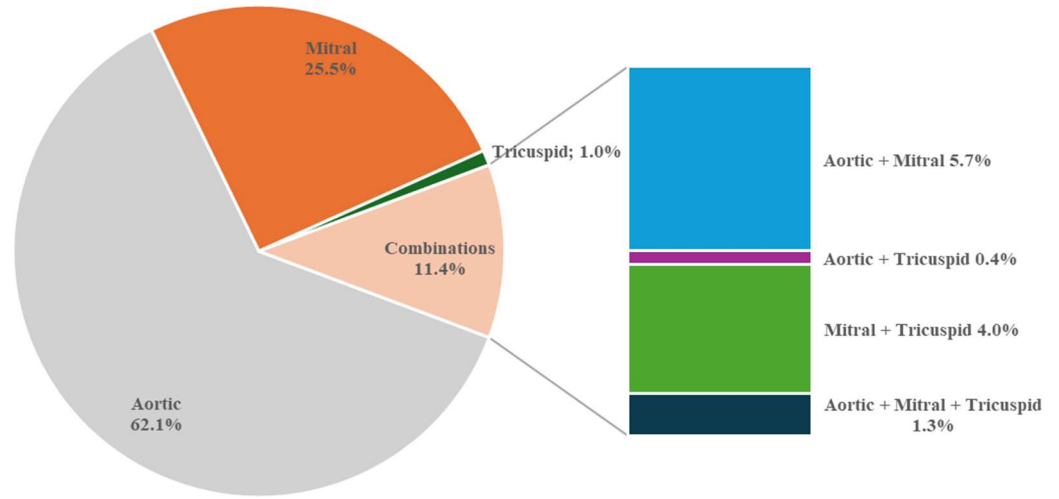


Table S1: Number of hospitalizations by Age category, CCI and year of discharge.

Age group	Year	CCI				
		0	1	2-3	4+	Total
18-59	2010	4,067	780	373	82	5,302
	2011	3,738	926	446	121	5,231
	2012	3,748	950	490	137	5,325
	2013	3,558	978	509	159	5,204
	2014	3,530	991	548	190	5,259
	2015	3,708	1,006	598	173	5,485
	2016	3,791	951	546	225	5,513
	2017	3,737	1,014	622	267	5,640
	2018	4,043	1,039	628	272	5,982
60-69	2010	4,215	1,052	711	132	6,110
	2011	3,602	1,330	942	250	6,124
	2012	3,556	1,288	1,034	348	6,226
	2013	3,442	1,304	1,105	379	6,230
	2014	3,485	1,332	1,168	405	6,390
	2015	3,656	1,358	1,257	505	6,776
	2016	3,561	1,415	1,238	514	6,728
	2017	3,584	1,349	1,224	505	6,662
	2018	3,707	1,375	1,291	615	6,988
70-79	2010	6,353	1,654	1,231	312	9,550
	2011	5,135	2,010	1,697	526	9,368
	2012	5,001	2,148	1,909	699	9,757
	2013	5,023	2,194	2,075	813	10,105
	2014	5,127	2,278	2,144	888	10,437
	2015	5,055	2,174	2,232	1,028	10,489
	2016	5,166	2,336	2,336	1,074	10,912
	2017	5,372	2,533	2,646	1,293	11,844
	2018	5,690	2,556	2,823	1,563	12,632
80-100	2010	1,944	670	477	121	3,212
	2011	1,753	777	767	217	3,514
	2012	1,823	876	766	323	3,788
	2013	1,845	937	952	387	4,121
	2014	2,022	1,020	1,121	490	4,653
	2015	2,058	1,116	1,162	534	4,870
	2016	2,310	1,265	1,390	659	5,624
	2017	2,763	1,560	1,800	933	7,056
	2018	3,134	1,773	2,053	1,176	8,136